



SCORPION EXPRESS

Corporate Overview



Introduction about Scorpion group

**Leaders, Torch-bearers,
Innovators And A Name
Whose Skills You Can
Count On.**



A leading name in **3PL services** and **Packaging Solutions**, we the Scorpion Group are a multiple end-to-end solution based company, with over 20 years of combined experience. Our experience enables us to confidently zero in on our customer's needs and the time we invest in R&D keeps us ahead in the game. Our operations run through two businesses, 'Scorpion Express Pvt. Ltd.' and 'Scorpion Containers Pvt. Ltd.' under our parent company, the Scorpion Group.

20 Years

In Supply Chain Management

As a leading Supply Chain Company, we are present in the entire ecosystem

1000+

Employee Strength

Our workforce is our strength, and their dedication is our trump card.

60mil+

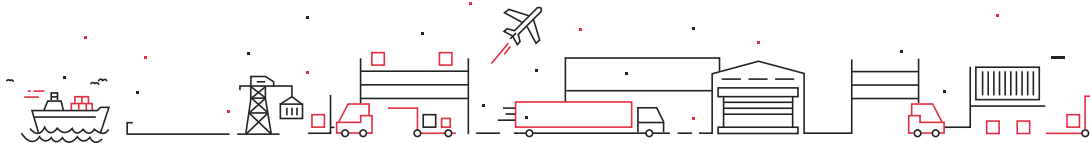
Production Capacity

Seven full scale manufacturing units producing over 60 million products per month.

24X7

Customer Support

We promise you all-weather operations and customer support.



The Scorpion Promise



Honesty, Integrity, Trust

Our Reliable, responsive and Steadfast services enable us to cherish long-term, fruitful client relations.



Best-in-class processes

We harness Information Technology to provide our clients with state-of-the-art services.



People-Centric Approach

We employ a people-centric approach to understand our client's needs and create seamless customer experience.



MD's Thoughts



J P N Singh

Managing Director,
Scorpion Group

The combination of Branding, Scaling, Technology and Networking is what leads to the growth of an organisation and as Scorpionites all our employees focus on mastering this. At Scorpion Group we believe that our organisation will grow, only if we empower our employees and give them space to develop into effective leaders.

On the other hand, our investment in Information Technology has allowed us to develop systems and processes that enable our clients to have cost-effective products and services at state-of-the-art quality. We are in constant engagement with project partners, stakeholders, beneficiaries and local communities, studying the potential impact of alternative and new technologies and indigenous knowledge.

We would continue with the same zeal to facilitate the stakeholders in accelerating their social, economic and environmental progress through effective management of humans and natural capital.

Our Journey



Founded in the year 2001 by Mr J P N Singh, Scorpion Group of Companies was created to lead. Scorpion Express Pvt. Ltd originated in the year 2002 which soon noted a phenomenal growth and nationwide presence. Scorpion Containers Pvt. Ltd., was established to overcome the hurdle of packaging in pharmaceuticals in the year 2005 by setting up manufacturing units based in R & D and customized packaging solutions. These are our roots but our story continues to grow.

To know more about our journey and milestones click on the link given below

<https://scorpiongroup.in/about/#timeline-container>

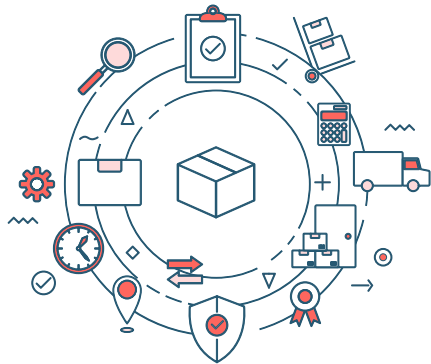
Overview of the group of companies - Scorpion Express, Scorpion Containers

SCORPION EXPRESS

We cover every square inch of India following a unique hybrid model of Hub-and-Spoke and long-haul routes.

Scorpion Express Pvt. Ltd. is an Express Cargo Service Provider, recognised for its quality and unique multi-product offering. We provide express and logistics services to B2B and B2C across the country.

It is not only a transportation and 3PL company, it is a guarantee of customer satisfaction, phenomenal shipment, consignment delivery and ethical conduct. We are backed with technology and provide real-time track and trace visibility on your end along with astounding coordination and accuracy in consignment management through our CRM Process. We believe in delivering safely every shipment on time, every time.



Scorpion Containers

Packaging your Brand

Scorpion Containers Pvt. Ltd. is focused on manufacturing packaging solutions. We use world-class technology to aid pharmaceutical companies by providing them with customised packaging solutions. We spend an extensive time on R&D to ensure that all our client's needs from design to usability, production, drawing approval, prototype development to scale up a batch, ensuring product quality, delivering the commercial product for final packaging and creating the right packaging for everything from sampling to the final product are met with accuracy.



Who do we work with?



SCORPION EXPRESS

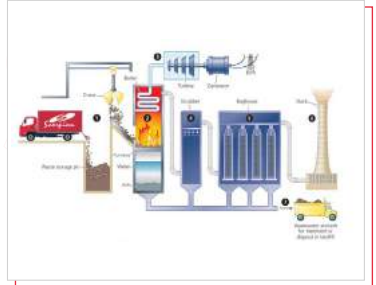
► FREIGHT TRANSPORTATION



► WAREHOUSING



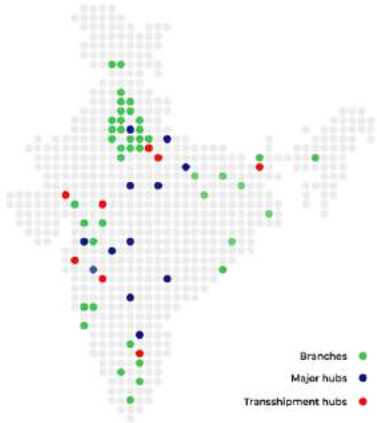
► CLEAN TECH TECHNOLOGY



FREIGHT TRANSPORTATION

- ▶ FTL Services
- ▶ Express Cargo Services
- ▶ Air Services
- ▶ Cool Plus
- ▶ Sample Distribution
- ▶ Stockist Distribution





FREIGHT TRANSPORTATION

Be it raw materials, finished stock, necessary equipment or any other consignment companies swear by our Freight Transportation services. Our 'Turnaround Time' is phenomenal and our 'Hub and Spokes Model' of the delivery system enables us to deliver and maintain our performance. The entire process of Freight Transportation is transparent, our customers can 'Track and Trace' their shipment throughout.

Every delivery is coupled with professionalism, reliability and a PAN India presence. Our associated services are - FTL, Express Cargo, Air Services, Sample Distribution & Stockist Distribution.

12

Major hubs

90

Branches

4 Million

Packages per month

2200 CR

Worth goods carried per month

Bangladesh, Nepal and Bhutan

SAARC delivered locations

► FTL Services

What we do, Our strengths & key features

With the infallible capability of the fleet comprising 1000+ vehicles coupled with our PAN India reach, we ensure safe and efficient transportation of your products anywhere, in record time with the help of cutting edge technology.

Strengths



Door to Door pick-up
and Delivery



With dedicated
IoT technology



Safety and Security
of shipments



Call centre
facility

► Express Cargo Services

What we do, Our strengths & key features

Our Express Service helps you address your time-bound delivery requirements with cost-effective delivery solutions. Express service offers a complete range of express distribution services that give you the flexibility to choose as per your business requirement.

Strengths



500+ vehicles
across the country



Maintaining
QTY TAT



Serving 19000+
Pincodes



Optimized route
planning system



24×7 customer
care centre

► Air Services

What we do, Our strengths & key features

Our Air Express Service covers 41 locations across India. We are present in all metros, state capitals and major towns, and We have the direct dealing with all major airlines such as AirIndia, Go Air, Air Asia, SpiceJet, Indigo and Vistara. Our specialities include skilled handling of pharma-based products such as Raw Material, Finished Goods and Cold Chain.

Strengths



Seamless and
Time-defined
service



Direct dealing
with all major
airlines



Multi-Model
Bookings



Real-Time
Track and Trace

► Cool Plus Services



Through our CoolPlus Service we provide comprehensive cold-chain logistics solutions through a sturdy fleet of speciality temperature-controlled vehicles. We facilitate inter-city and inter-state transport of pharma products throughout pan India.

Temperature Maintenance



Ambient:
15 to 25



Plus:
2 to 8



Minus:
-2 to -8

Capabilities and systems



Vehicle Type: 22 Ft Vehicle | 24 Ft Vehicle | Tata Ace

► Sample Distribution / Stockist Distribution

What we do, Our strengths & key features

Medical Representatives play a vital role in representing their company and products. Sample Distribution Service will ease the process of Physician Sample distribution to MRs in a cost-effective manner at their Doorstep.

Strengths



Serving 19000
pin codes



Hub and Spoke
Module



DEPS free
deliveries



Last mile
movement



TAT

How it functions

Step 1

Pickup is arranged

Step 2

Samples are sent
to the Delivery Branch

Step 3

Sorting & segregation
of shipments

Step 4

Samples are
Door Delivered.

Step 5

Acknowledgement
of POD

Key Features

What sets us apart are some of our **core service offerings**.

Designed to meet regular as well as seasonal requirements across the country.

Customer's freight requirements are serviced at the lowest costs with utmost security.

LTL shipping services with integrated warehousing, GST Management and material handling.

Fastest LTL delivery network in the country.

Value-added services

- Point-to-point express distribution services.
- Bulk and Break Delivery
- Door pickup & delivery
- Holiday & Sunday pickup/delivery.
- Carriers risk and Third-Party insured
- Payment accepted through FOD, COD and DOD
- DEPS and CAPA (Corrective and Preventive Action)
- Tamper-proof transit, Weather-proof container vehicles.
- Integration with customer ERP docket booking through API.
- Real-Time, end to end consignment tracking.
- Web and app-based complaint registrations system.
- Dedicated customer support team.
- E-billing & e-POD, Auto MIS and SMS updates.
- Mobile App based booking

WAREHOUSING

- › Warehousing - Capabilities & systems

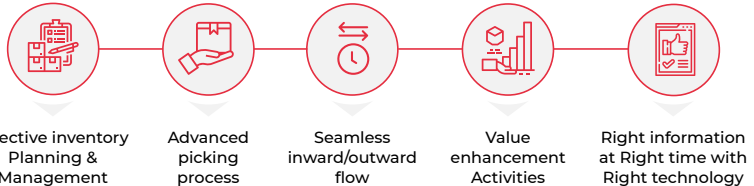




WAREHOUSING

A warehouse is more than a large shed; it is a key facility in a company's supply chain and distribution strategy. Planning, designing and expanding a warehouse is not something that can be rushed. Your warehouse needs to be developed in a way that it serves your business's needs two, three or even five years down the line. This is where we can assist you in this strategy development. Our Services and our experienced consultants will work with you to help you develop a new warehouse to meet your present and future requirements.

How 3PLs Enhance Order Fulfilment?



Warehousing - Capabilities & systems

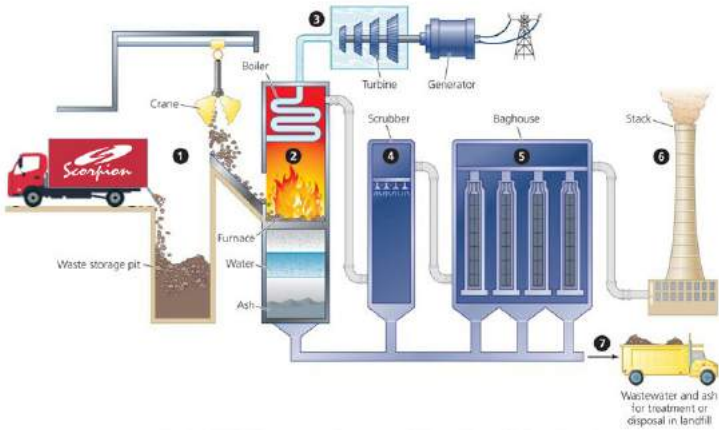
Our Capabilities

We are one of Mumbai's leading, privately owned, 3PL Companies. We provide a multi-user "shared load" distribution. Our 'Warehouse Solutions' include both shared user and dedicated warehousing along with stock consolidation. Companies in the Pharmaceuticals, Healthcare, Technology, FMCG, RMG, Food Product, Automobile, Retail and other industries can rely on us to manage their warehouse operations as part of an integrated logistics management solution.

We provide the following services

- Distribution & Delivery Management
- Office Automation Support
- Professional & Contract Labor Supply
- Inventory & Stock Control
- Warehouse Management
- Return Processing
- Fulfilment
- Performance Testing
- MIS & Internet Access
- Loading / Unloading
- Transportation
- Repacking / Reworking
- Statutory Requirement
- Labelling
- Pick & Pack

CLEANTECH TECHNOLOGY



Disposal of Pharmaceutical waste management is an important part of pharmaceutical industries. The unwanted materials like expired medicines, stock expired medicines, etc can eventually turn into hazardous or non-hazardous material, therefore, it has to be discarded immediately. We play a vital role in this right from the pickup of the waste material till the issuing of destruction certificates and this entire process we named Cleantech Technology.

We have a tie-up for the disposal of waste material which is a Govt approved Service Provider since 2001 following 100% of compliance

CleanTech

Our Process

1

Post the request from the customer, empty vehicle will be send to weighing bridge for noting down the weight of the vehicle.

2

Once the weight of the vehicle is noted the same vehicle goes to the customer to collect the expired and damaged goods.

3

SEPL person will verify the condition of the packaging and if the the packaging is appropriate then the goods is loaded in the vehicle.

4

The weight of the fully-loaded vehicle will again be weighed and the weight will be noted for getting the actual weight of the consignment. The copy of the weighing receipt will be handed over to the customer.

5

Customer shall ensure that hazardous waste is packed in a manner suitable for safe handling, storage and transportation

6

The weight and measurement of expired goods being collected will be recorded at the time of collection and signed.

7

Company will send all expired and damaged goods to the incineration plant.

8

On the receipt of expired goods at our disposal units, the weight & measurement are taken again & are matched with the client weight.

9

Carry out destruction activity in presence of SEPL Representative & Quality Assurance Representative of the customer.

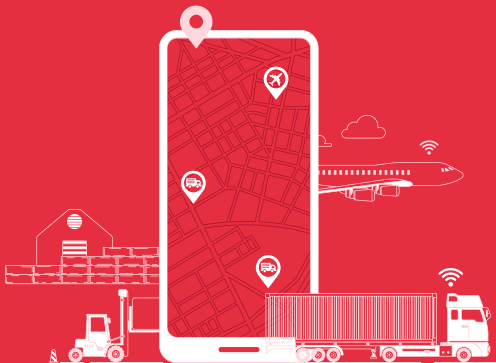
10

The expired goods shall be incinerated at High Temperature using Double Chamber Incinerator on prescribed temp i.e. 800°C in primary chamber and 1050°C in secondary chamber and the Glass and Plastic bottles if any shall be mutilated or shredded by using shredder

11

Provide a Destruction Certificate to the customer after completion of disposal activity .

TECHNOLOGY



Mobile App for
booking and
tracking orders



Barcode System
for consignments



GPS Vehicle
tracking



QR Code Payment
gateway



API ready use



Digital website -
AI Chat-bot



MIS



WhatsApp
integration



Barcode
Printer



CCTV

AWARDS



AWARDS




THANK YOU!



**Know more about our
services reach out to us!**

 enquiry@scorpiongroup.in

 9702019001

 <https://bit.ly/39JxT3i>

 www.scorpiongroup.in